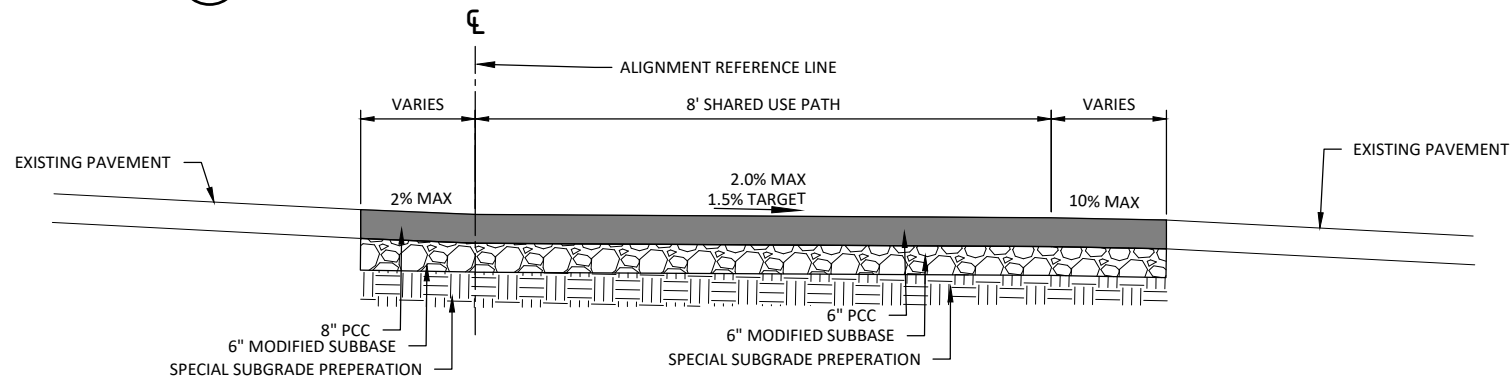
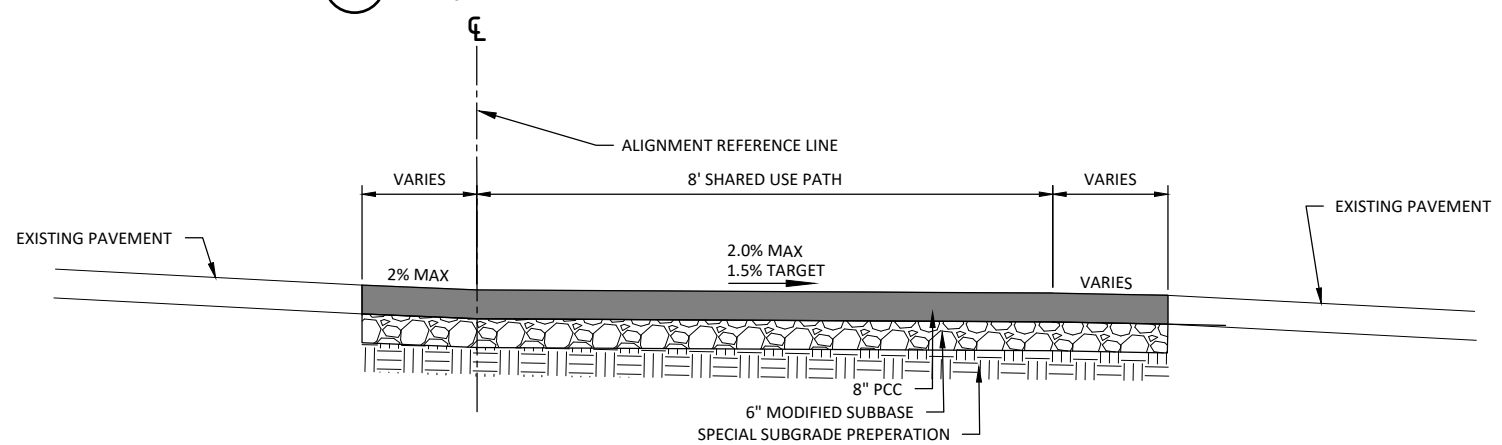


1 TYPICAL PATH SECTION: STA: 100+76.39 TO STA: 102+56.94; STA:102+96.56 TO 104+57.12; STA: 104+96.98 TO 106+71.79;
 NTS STA: 107+54.00 TO STA: 109+06.82; STA: 109+84.73 TO STA: 111+33.57



2 TYPICAL DRIVEWAY SECTION: STA: 102+56.94 TO STA: 102+96.56; STA: 104+57.12 TO STA:104+96.98
 NTS



3 TYPICAL ROADWAY SECTION: STA. 100+18.11 TO STA: 100+76.39; STA: 106+71.79 TO STA: 107+54.00; STA:109+06.82 TO STA:109+84.73
 NTS

NOTE
 1. SEE CROSS SECTIONS FOR ACCURATE SLOPES.

© Bolton & Menk, Inc. 2024. All Rights Reserved. A:\PROJECTS\131282\CAD\CSD\PHASE 2\131282B01.dwg 11/18/2024 8:19:19 AM

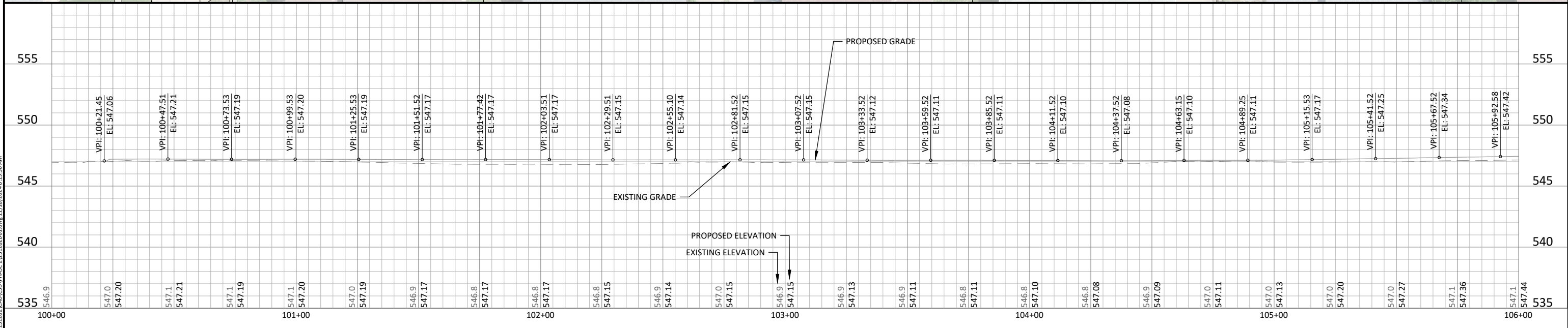
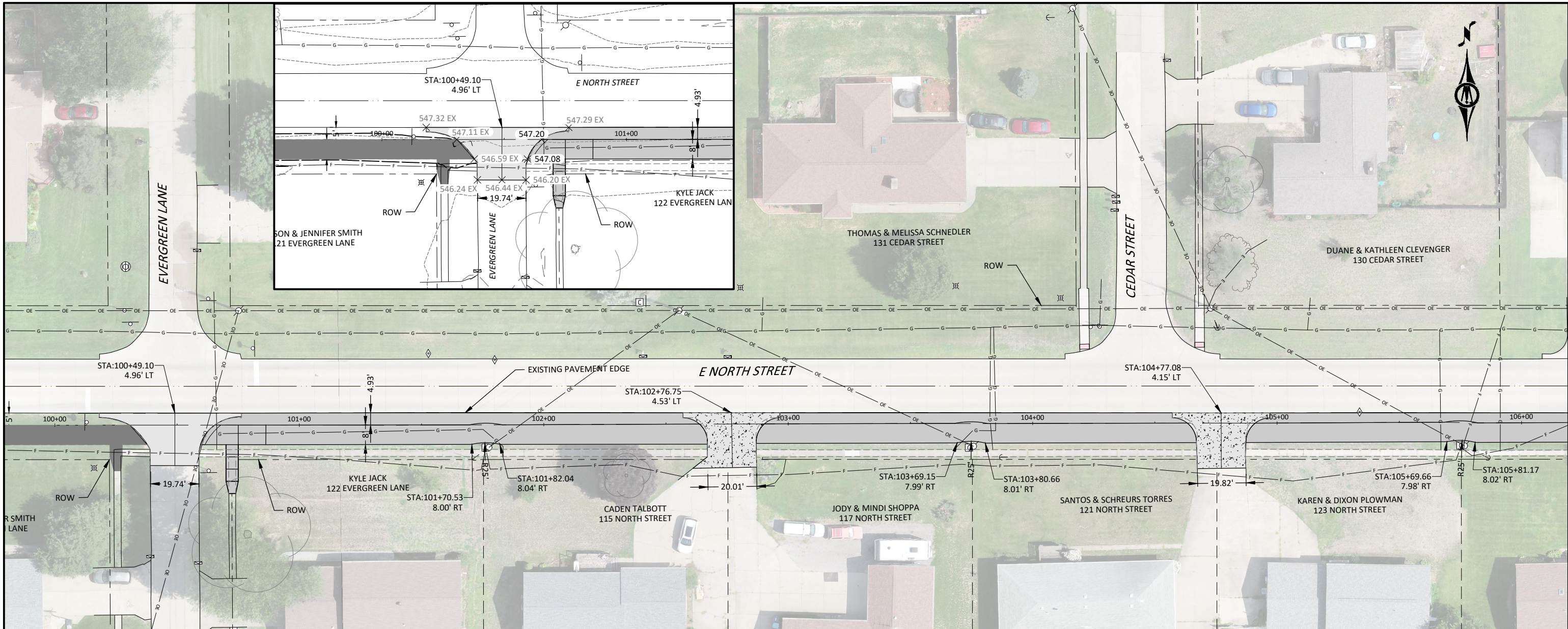


401 FIRST ST SE, SUITE 201
 CEDAR RAPIDS, IOWA 52401
 Phone: (319) 362-3219
 Email: CedarRapids@bolton-menk.com
 www.bolton-menk.com

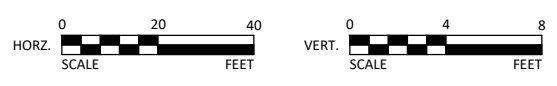
DESIGNED	REV	DESCRIPTION	DATE
JRG/FAM	0	CONSTRUCTION	3/12/24
JRG	1	PHASE 2 - CONSTRUCTION	11/12/24
CHECKED	JLE		
CLIENT PROJ. NO.	0G1.131282		

FRUITLAND, IOWA
 NORTH STREET TRAIL
 TYPICAL SECTIONS - PHASE 2

SHEET
B.03



© Bolton & Menk, Inc. 2024. All Rights Reserved. P:\PROJECTS\2024\11\18\2024-11-18\2024-11-18-19-36.dwg

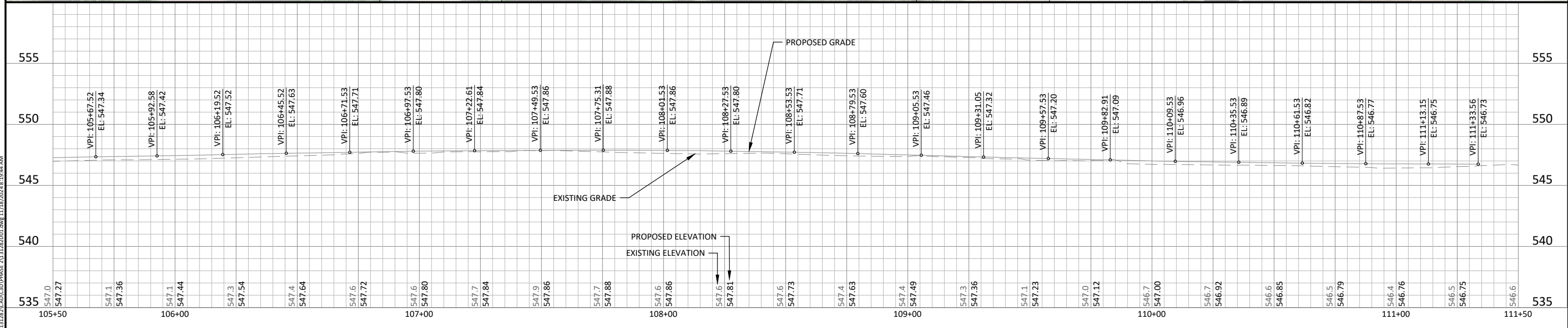
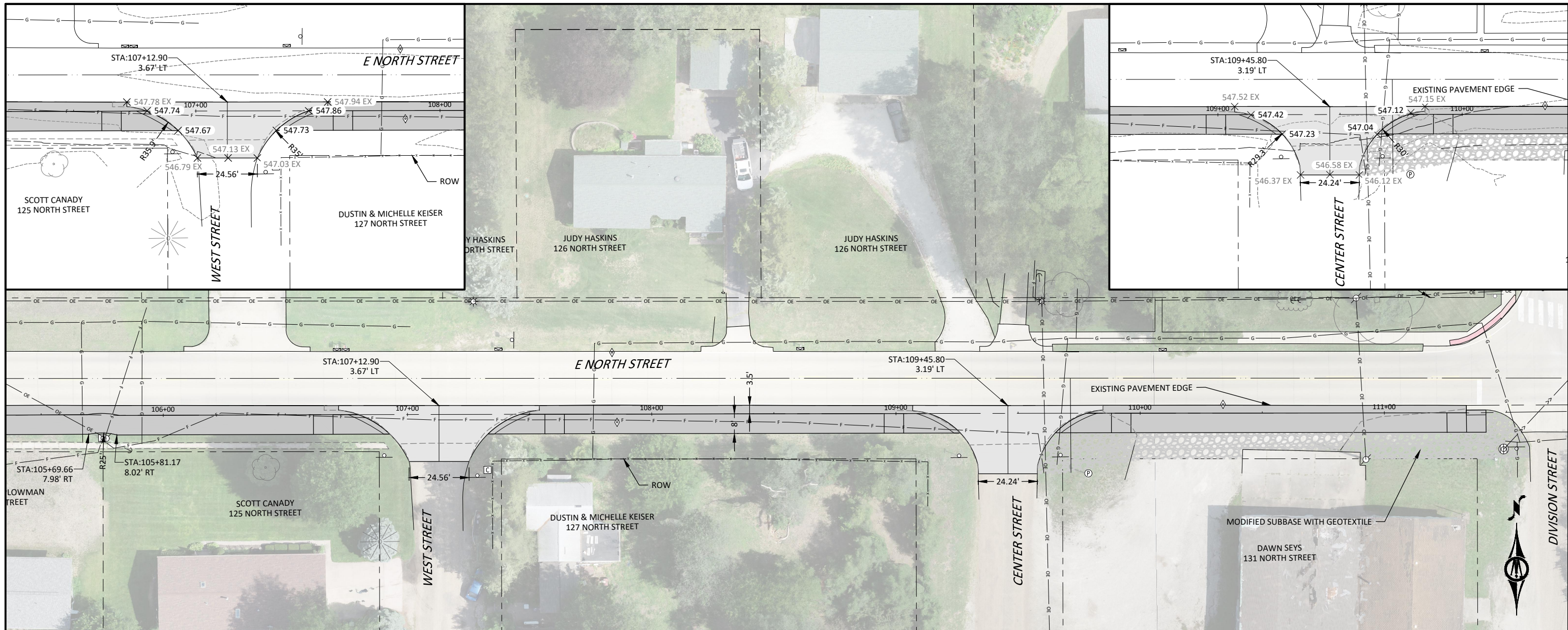


401 FIRST ST SE, SUITE 201
 CEDAR RAPIDS, IOWA 52401
 Phone: (319) 362-3219
 Email: CedarRapids@bolton-menk.com
 www.bolton-menk.com

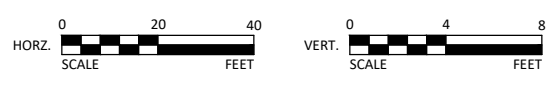
DESIGNED	REV	DESCRIPTION	DATE
JRG/FAM	0	CONSTRUCTION	3/12/24
JRG	1	PHASE 2 - CONSTRUCTION	11/12/24
JLE			
CLIENT PROJ. NO.	061.131282		

FRUITLAND, IOWA
 NORTH STREET TRAIL
 PLAN & PROFILE - PHASE 2

SHEET
D.06



© Bolton & Menk, Inc. 2024. All Rights Reserved.
 Fruitland, IA 52603 131282 CAD (S) (Phase 2) 11/18/2024 8:19:44 AM

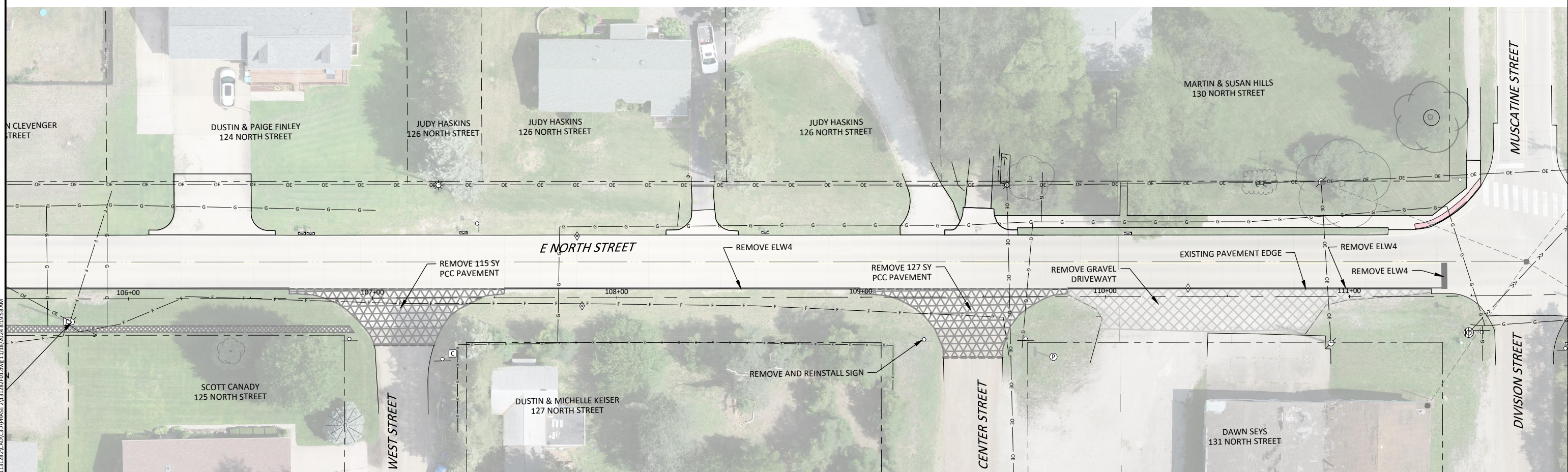
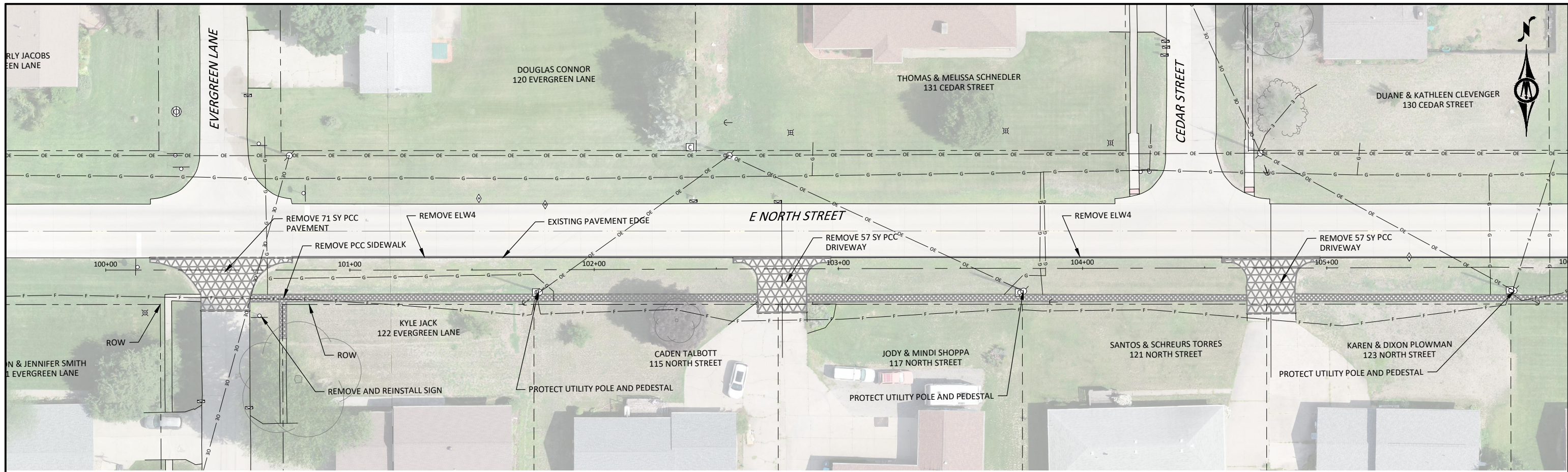


401 FIRST ST SE, SUITE 201
 CEDAR RAPIDS, IOWA 52401
 Phone: (319) 362-3219
 Email: CedarRapids@bolton-menk.com
 www.bolton-menk.com

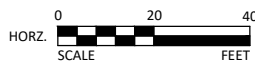
DESIGNED	REV	DESCRIPTION	DATE
JRG/FAM	0	CONSTRUCTION	3/12/24
JRG	1	PHASE 2 - CONSTRUCTION	11/12/24
JLE			
CLIENT PROJ. NO.	OG1.131282		

FRUITLAND, IOWA
 NORTH STREET TRAIL
 PLAN & PROFILE - PHASE 2

SHEET
D.07



© Bolton & Menk, Inc. 2024. All Rights Reserved.
 Fruitland, IA 50601 131282 CAD (Phase 2) 11/16/2024 8:19:58 AM

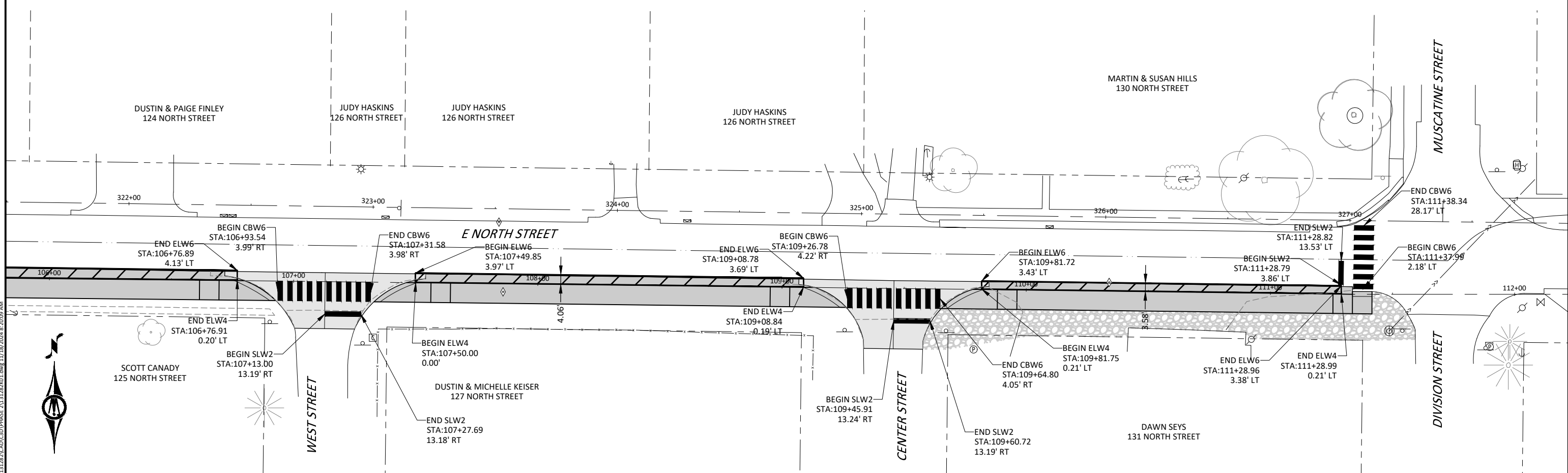
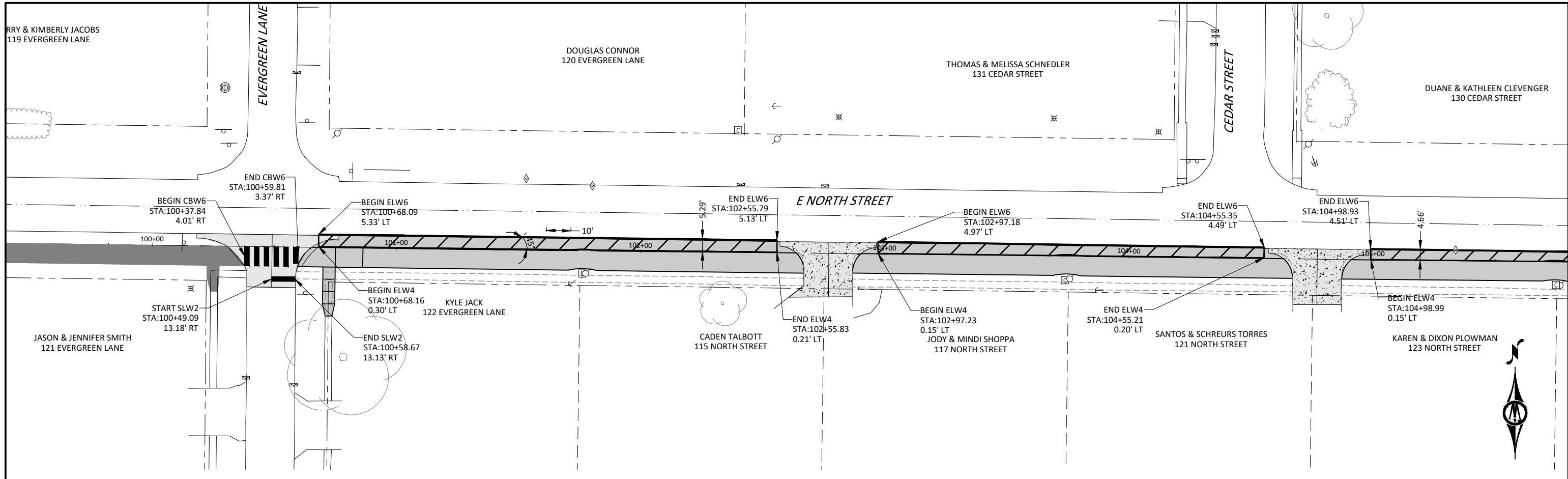


401 FIRST ST SE, SUITE 201
 CEDAR RAPIDS, IOWA 52401
 Phone: (319) 362-3219
 Email: CedarRapids@bolton-menk.com
 www.bolton-menk.com

DESIGNED	REV	DESCRIPTION	DATE
JRG/FAM	0	CONSTRUCTION	3/12/24
JRG	1	PHASE 2 - CONSTRUCTION	11/12/24
CHECKED			
JLE			
CLIENT PROJ. NO.			
OG1.131282			

FRUITLAND, IOWA
 NORTH STREET TRAIL
 REMOVALS - PHASE 2

SHEET
F.03



© Bolton & Menk, Inc. 2024. All Rights Reserved.
 P:\131282\131282\CADD\CSD\Phase 2\131282.dwg 11/18/2024 8:20:09 AM

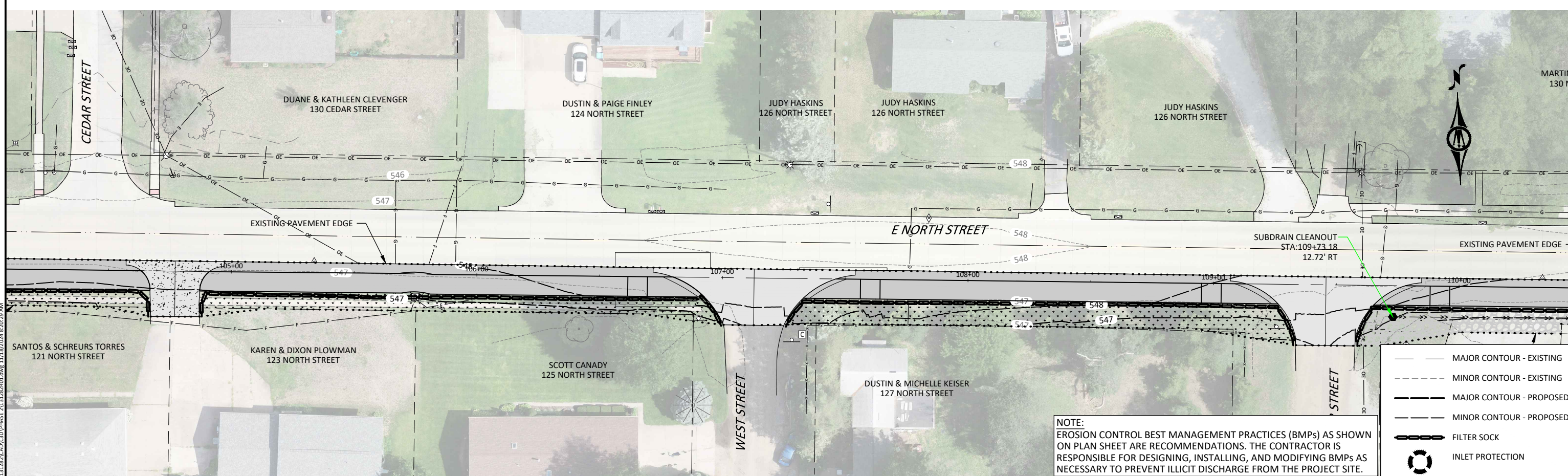
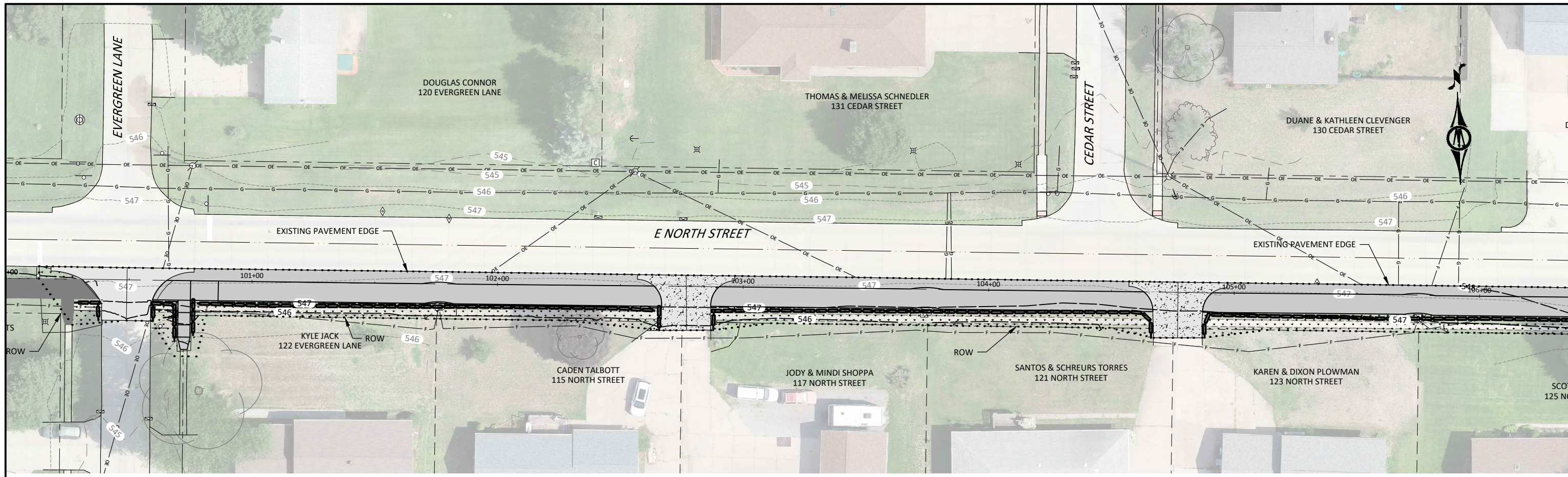


401 FIRST ST SE, SUITE 201
 CEDAR RAPIDS, IOWA 52401
 Phone: (319) 362-3219
 Email: CedarRapids@bolton-menk.com
 www.bolton-menk.com

DESIGNED	REV	DESCRIPTION	DATE
JRG/FAM	0	CONSTRUCTION	3/12/24
JRG	1	PHASE 2 - CONSTRUCTION	11/12/24
JLE			
CLIENT PROJ. NO.	061.131282		

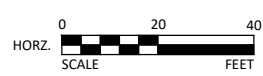
FRUITLAND, IOWA
 NORTH STREET TRAIL
 PAVEMENT MARKINGS - PHASE 2

SHEET
N.03



NOTE:
 EROSION CONTROL BEST MANAGEMENT PRACTICES (BMPs) AS SHOWN ON PLAN SHEET ARE RECOMMENDATIONS. THE CONTRACTOR IS RESPONSIBLE FOR DESIGNING, INSTALLING, AND MODIFYING BMPs AS NECESSARY TO PREVENT ILLICIT DISCHARGE FROM THE PROJECT SITE.

- MAJOR CONTOUR - EXISTING
- - - MINOR CONTOUR - EXISTING
- MAJOR CONTOUR - PROPOSED
- - - MINOR CONTOUR - PROPOSED
- FILTER SOCK
- ⊙ INLET PROTECTION



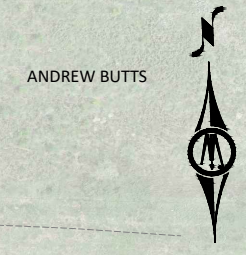
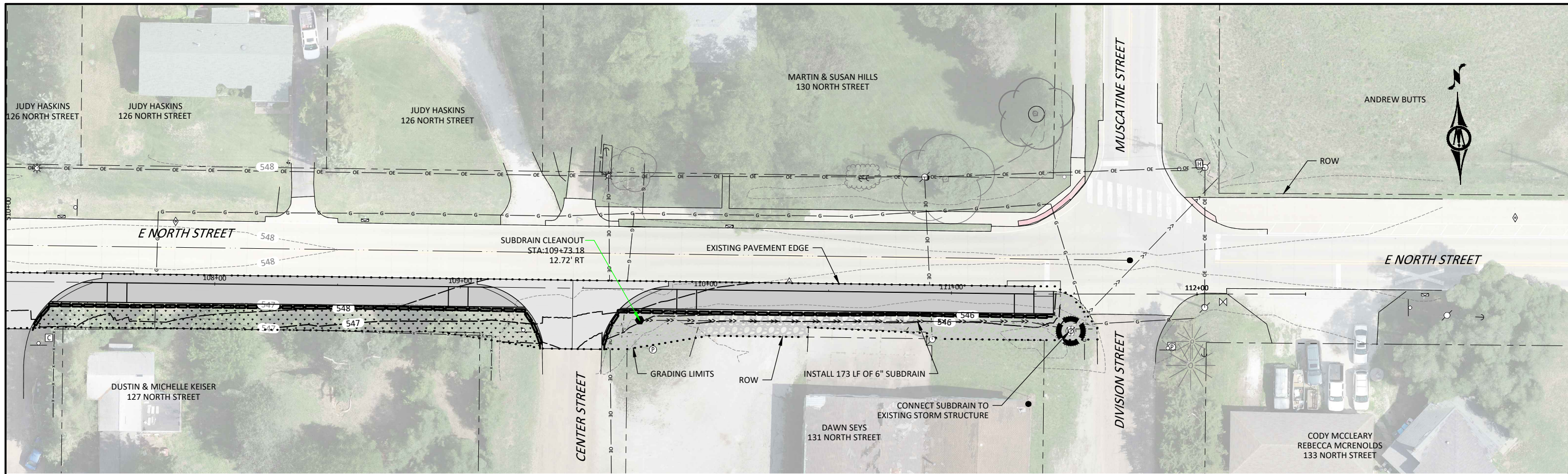
BOLTON & MENK
 401 FIRST ST SE, SUITE 201
 CEDAR RAPIDS, IOWA 52401
 Phone: (319) 362-3219
 Email: CedarRapids@bolton-menk.com
 www.bolton-menk.com

DESIGNED	REV	DESCRIPTION	DATE
JRG/FAM	0	CONSTRUCTION	3/12/24
JRG	1	PHASE 2 - CONSTRUCTION	11/12/24
CHECKED			
JLE			
CLIENT PROJ. NO.			
OG1.131282			

FRUITLAND, IOWA
 NORTH STREET TRAIL
 EROSION CONTROL - PHASE 2

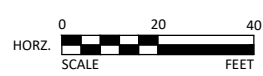
SHEET
R.02

© Bolton & Menk, Inc. 2024. All Rights Reserved.
 \\P01\LAN_G\131282\CADD\PHASE 2\131282PHASE 2.dwg 11/18/2024 8:20:29 AM



NOTE:
 EROSION CONTROL BEST MANAGEMENT PRACTICES (BMPs) AS SHOWN ON PLAN SHEET ARE RECOMMENDATIONS. THE CONTRACTOR IS RESPONSIBLE FOR DESIGNING, INSTALLING, AND MODIFYING BMPs AS NECESSARY TO PREVENT ILLICIT DISCHARGE FROM THE PROJECT SITE.

- MAJOR CONTOUR - EXISTING
- - - MINOR CONTOUR - EXISTING
- MAJOR CONTOUR - PROPOSED
- - - MINOR CONTOUR - PROPOSED
- ▬ FILTER SOCK
- ⊙ INLET PROTECTION



401 FIRST ST SE, SUITE 201
 CEDAR RAPIDS, IOWA 52401
 Phone: (319) 362-3219
 Email: CedarRapids@bolton-menk.com
 www.bolton-menk.com

DESIGNED	REV	DESCRIPTION	DATE
JRG/FAM	0	CONSTRUCTION	3/12/24
DRAWN	1	PHASE 2 - CONSTRUCTION	11/12/24
CHECKED	JLE		
CLIENT PROJ. NO.	OG1.131282		

FRUITLAND, IOWA
 NORTH STREET TRAIL
 EROSION CONTROL - PHASE 2

SHEET
R.04

© Bolton & Menk, Inc. 2024. All Rights Reserved.
 P:\PROJECTS\131282\131282\CADD\CD\PHASE 2\131282PHASE 2.dwg 11/18/2024 8:20:32 AM



E NORTH STREET

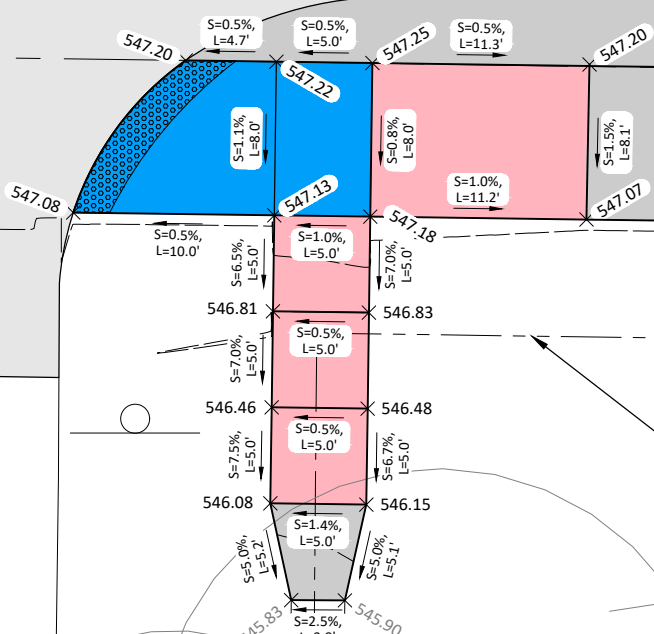
100+00

101+00

EVERGREEN LANE

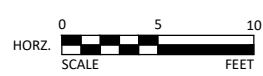
KYLE JACK
122 EVERGREEN LANE

ROW



LEGEND

- SIDEWALK RAMP
- TURNING SPACE
- SIDEWALK
- TRUNCATED DOME



401 FIRST ST SE, SUITE 201
CEDAR RAPIDS, IOWA 52401
Phone: (319) 362-3219
Email: CedarRapids@bolton-menk.com
www.bolton-menk.com

DESIGNED	REV	DESCRIPTION	DATE
JRG/FAM	0	CONSTRUCTION	3/12/24
JRG	1	PHASE 2 - CONSTRUCTION	11/12/24
JLE			
CLIENT PROJ. NO.	OG1.131282		

FRUITLAND, IOWA
NORTH STREET TRAIL
SIDEWALK SHEETS - PHASE 2

SHEET
S.06

© Bolton & Menk, Inc. 2024. All Rights Reserved. Fruitland, IA, 06/13/2024, C:\03\131282\CAD\CSD\PHASE 2\131282S01.dwg 11/18/2024 8:20:46 AM



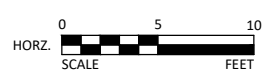
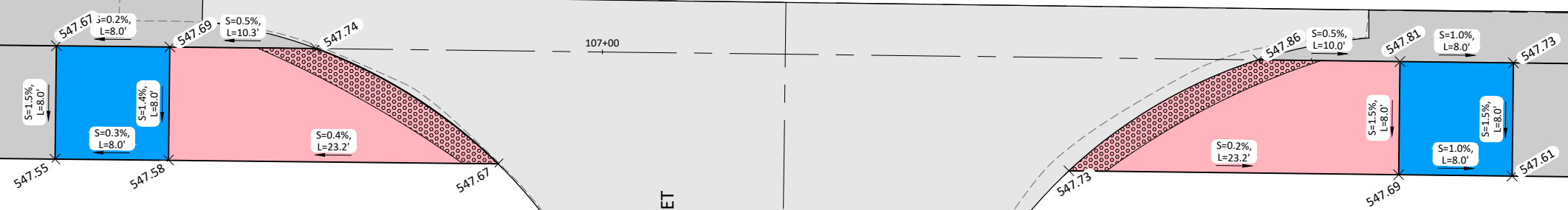
E NORTH STREET

WEST STREET

107+00

DUSTIN & MICHELLE KEISER
127 NORTH STREET

LEGEND	
	SIDEWALK RAMP
	TURNING SPACE
	SIDEWALK
	TRUNCATED DOME



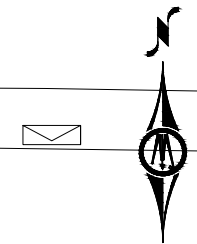
401 FIRST ST SE, SUITE 201
CEDAR RAPIDS, IOWA 52401
Phone: (319) 362-3219
Email: CedarRapids@bolton-menk.com
www.bolton-menk.com

DESIGNED	REV	DESCRIPTION	DATE
JRG/FAM	0	CONSTRUCTION	3/12/24
JRG	1	PHASE 2 - CONSTRUCTION	11/12/24
CHECKED	JLE		
CLIENT PROJ. NO.	0G1.131282		

FRUITLAND, IOWA
NORTH STREET TRAIL
SIDEWALK SHEETS - PHASE 2

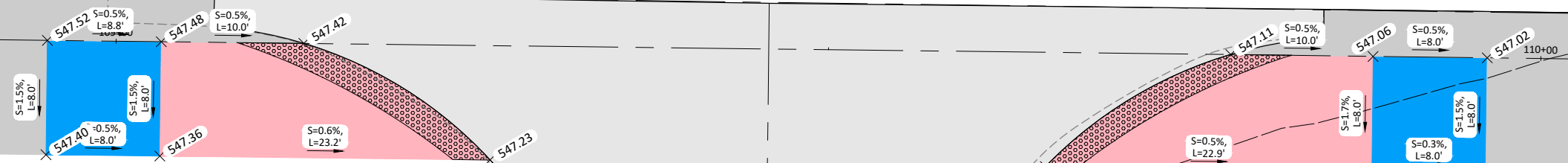
SHEET
S.07

© Bolton & Menk, Inc. 2024. All Rights Reserved. P:\PROJECTS\131282\CAD\CAD PHASE 2\131282S07.dwg 11/18/2024 8:20:47 AM

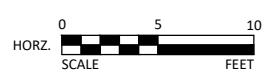


E NORTH STREET

CENTER STREET



LEGEND	
	SIDEWALK RAMP
	TURNING SPACE
	SIDEWALK
	TRUNCATED DOME



401 FIRST ST SE, SUITE 201
 CEDAR RAPIDS, IOWA 52401
 Phone: (319) 362-3219
 Email: CedarRapids@bolton-menk.com
 www.bolton-menk.com

DESIGNED	REV	DESCRIPTION	DATE
JRG/FAM	0	CONSTRUCTION	3/12/24
JRG	1	PHASE 2 - CONSTRUCTION	11/12/24
JLE			
CLIENT PROJ. NO.	OG1.131282		

FRUITLAND, IOWA
 NORTH STREET TRAIL
 SIDEWALK SHEETS - PHASE 2

SHEET
S.08

© Bolton & Menk, Inc. 2024. All Rights Reserved.
 A:\PROJECTS\131282\CAD\CSD\PHASE 2\131282S01.dwg 11/18/2024 8:20:49 AM

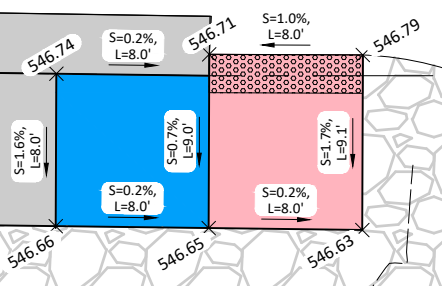
E NORTH STREET

MUSCATINE STREET




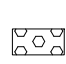
DIVISION STREET

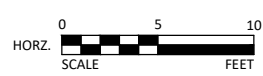
111+00

112+00



LEGEND

-  SIDEWALK RAMP
-  TURNING SPACE
-  SIDEWALK
-  TRUNCATED DOME



401 FIRST ST SE, SUITE 201
CEDAR RAPIDS, IOWA 52401
Phone: (319) 362-3219
Email: CedarRapids@bolton-menk.com
www.bolton-menk.com

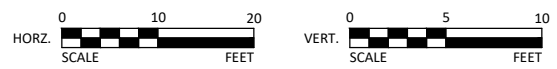
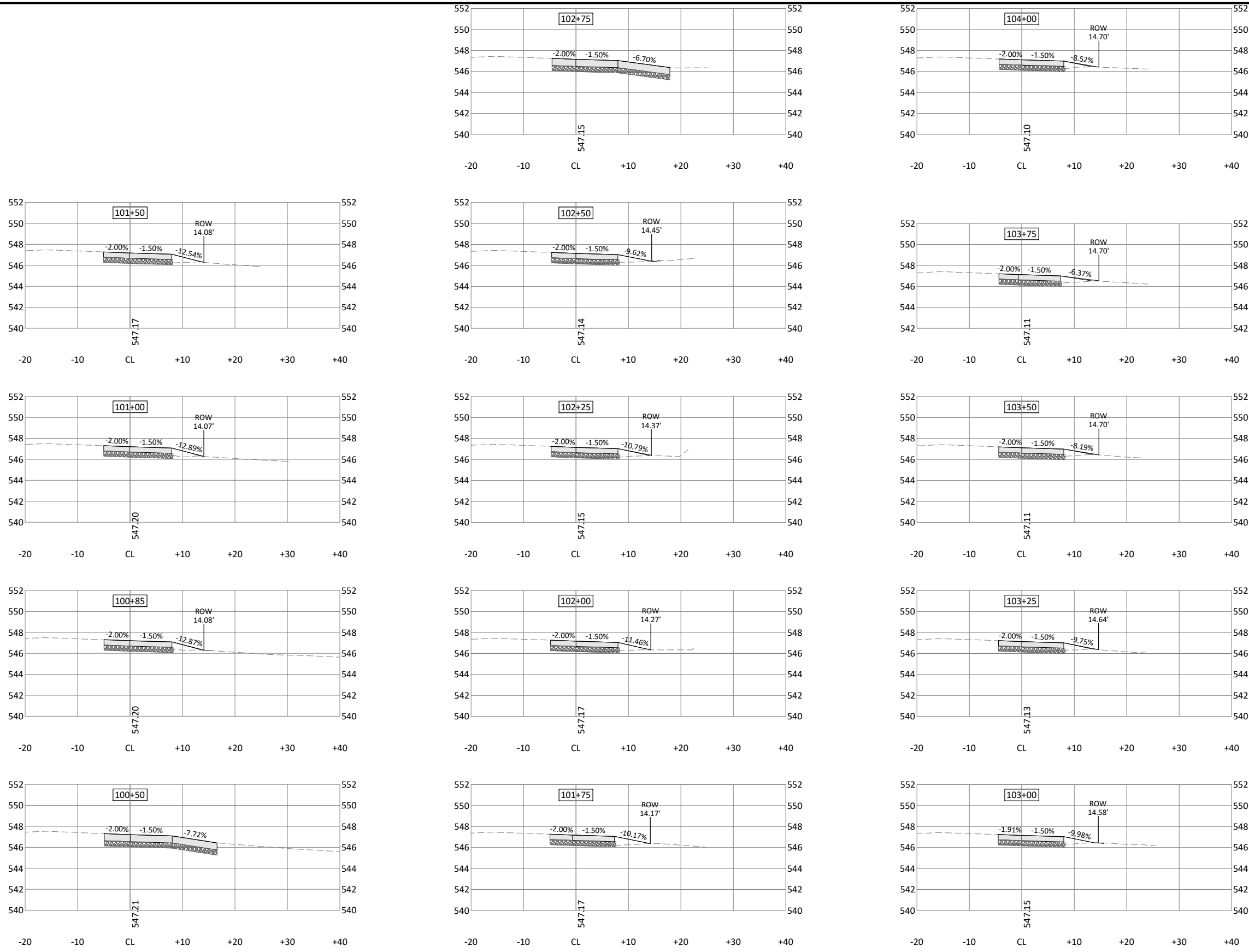
DESIGNED	REV	DESCRIPTION	DATE
JRG/FAM	0	CONSTRUCTION	3/12/24
JRG	1	PHASE 2 - CONSTRUCTION	11/12/24
JLE			
CLIENT PROJ. NO.	OG1.131282		

FRUITLAND, IOWA
NORTH STREET TRAIL
SIDEWALK SHEETS - PHASE 2

SHEET
S.09

© Bolton & Menk, Inc. 2024. All Rights Reserved. Fruitland_CAD\OG1.131282\CAD\GD\PHASE 2\131282S01.dwg 11/18/2024 8:20:50 AM

© Bolton & Menk, Inc. 2024. All Rights Reserved. P:\PROJECTS\131282\CAD\CROSS\PHASE 2\131282.WPD.dwg 11/18/2024 8:21:00 AM

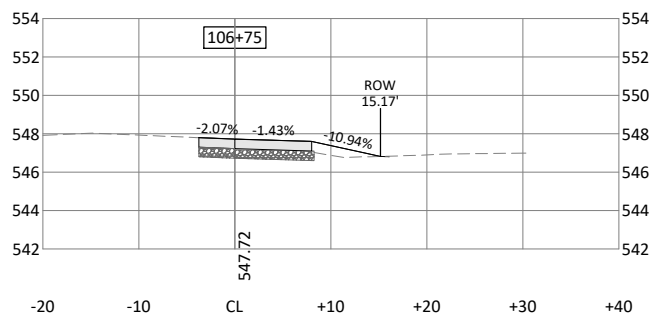
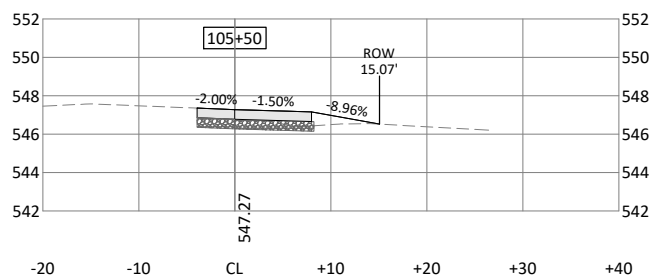
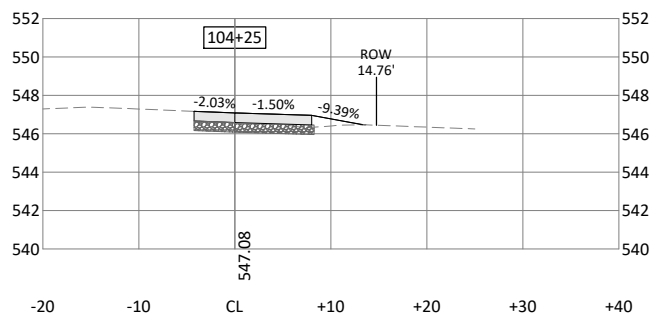
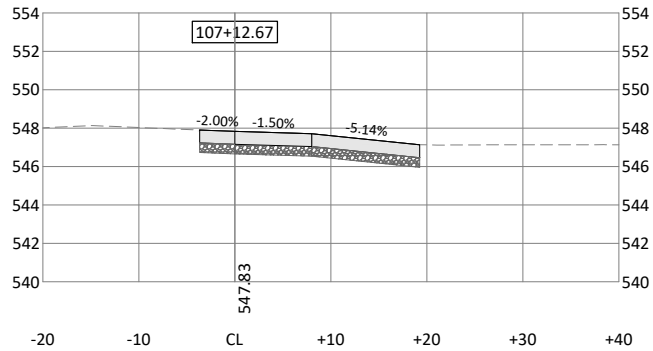
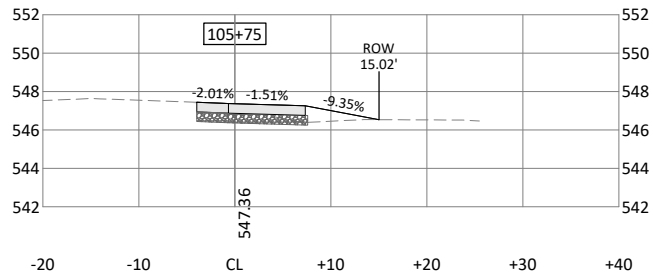
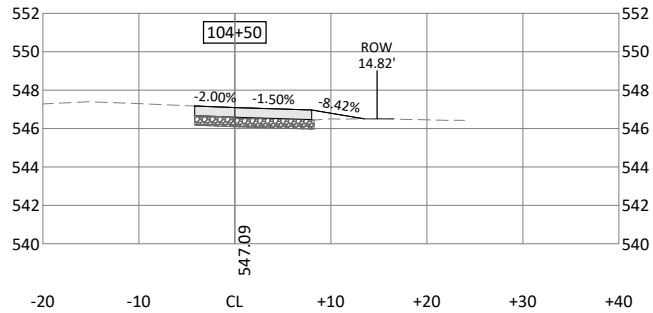
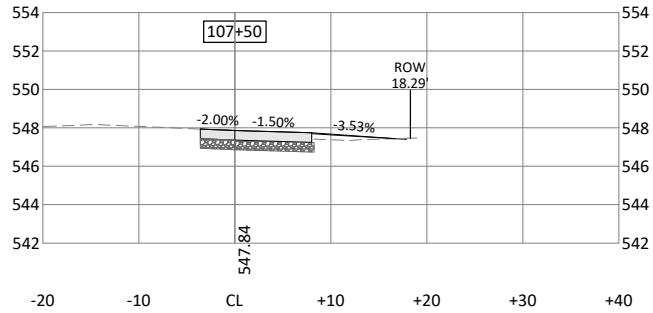
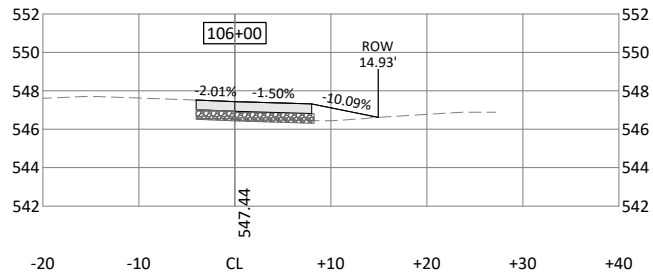
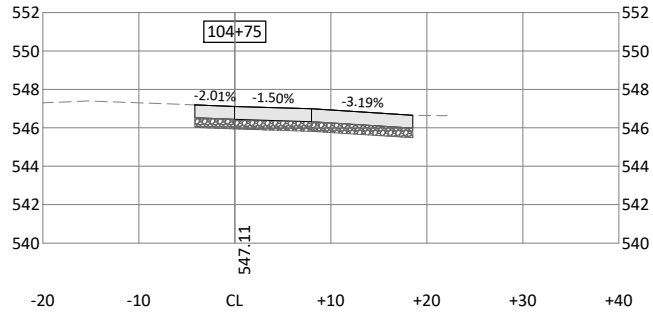
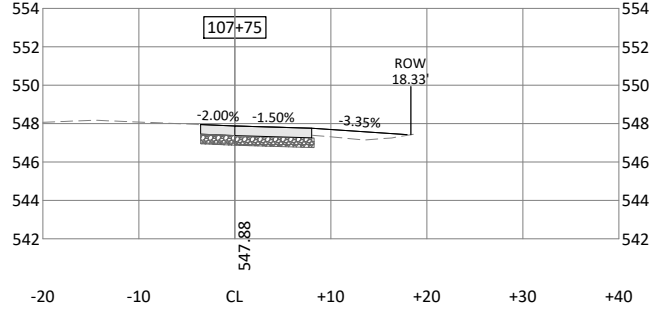
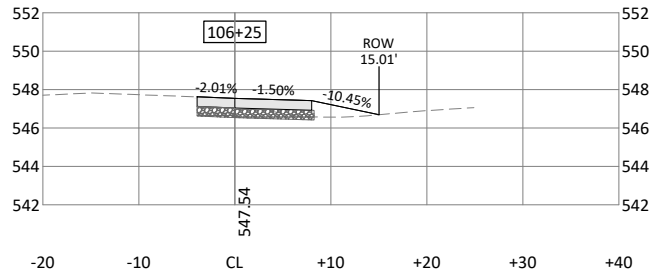
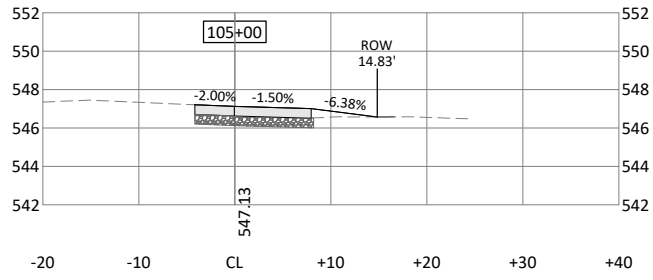
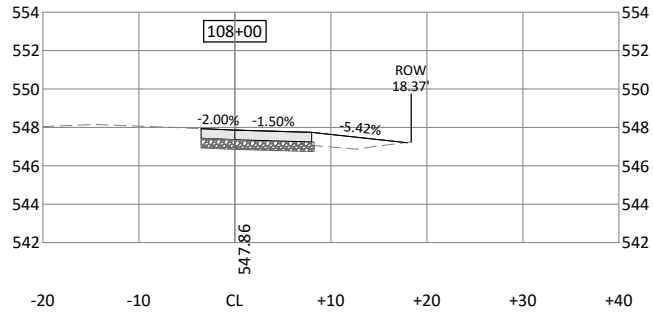
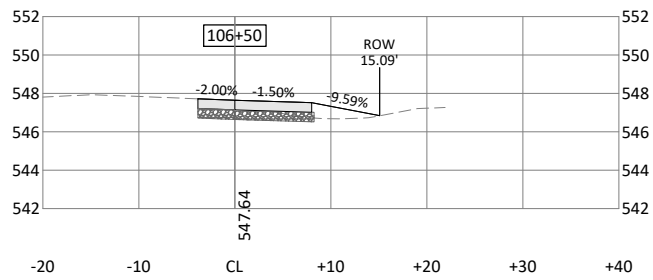
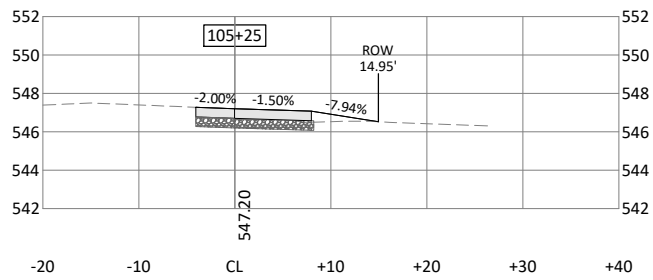


401 FIRST ST SE, SUITE 201
 CEDAR RAPIDS, IOWA 52401
 Phone: (319) 362-3219
 Email: CedarRapids@bolton-menk.com
 www.bolton-menk.com

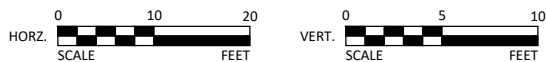
DESIGNED	REV	DESCRIPTION	DATE
JRG/FAM	0	CONSTRUCTION	3/12/24
JRG	1	PHASE 2 - CONSTRUCTION	11/12/24
CHECKED			
JLE			
CLIENT PROJ. NO.			
OG1.131282			

FRUITLAND, IOWA
 NORTH STREET TRAIL
 CROSS SECTIONS - PHASE 2

SHEET
 W.04



© Bolton & Menk, Inc. 2024. All Rights Reserved. P:\PROJECTS\131282\CADD\PHASE 2\131282-W05.dwg 11/18/2024 8:21:01 AM

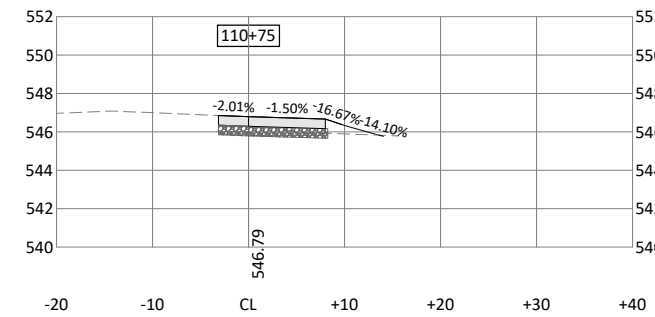
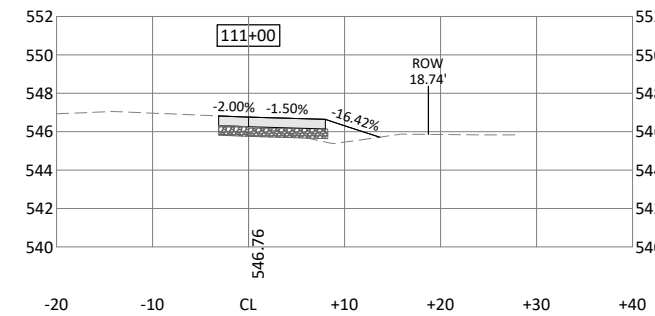
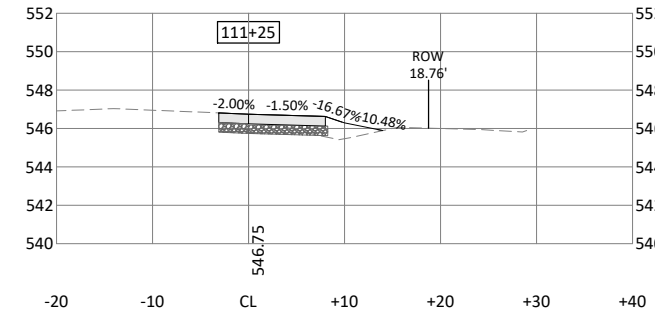
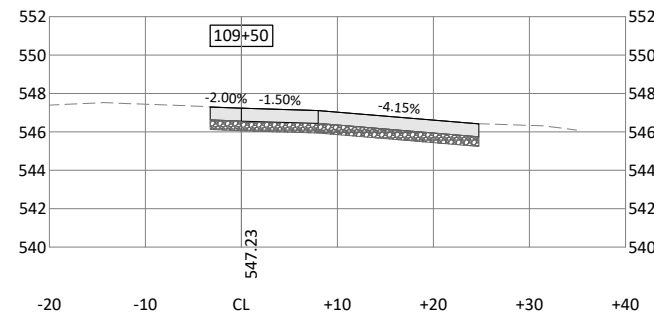
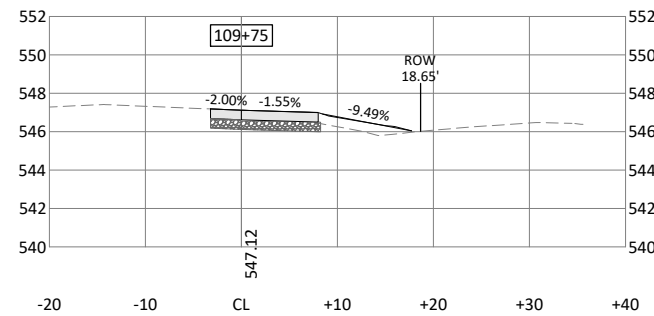
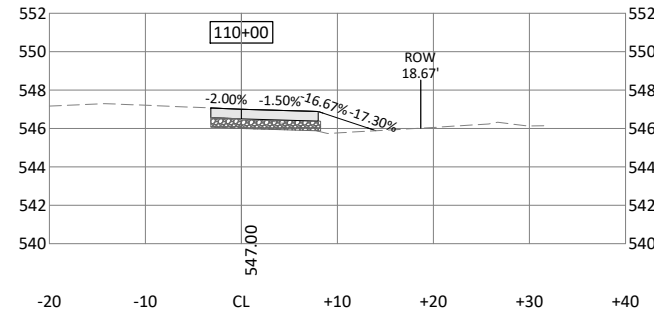
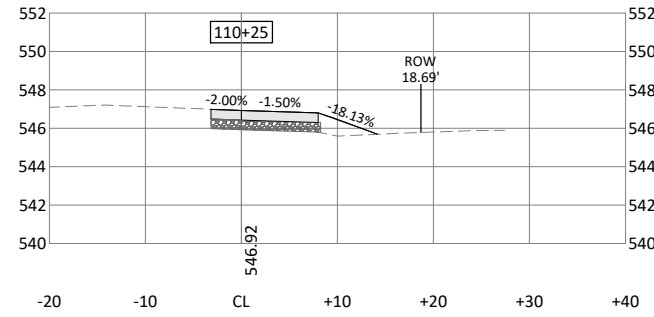
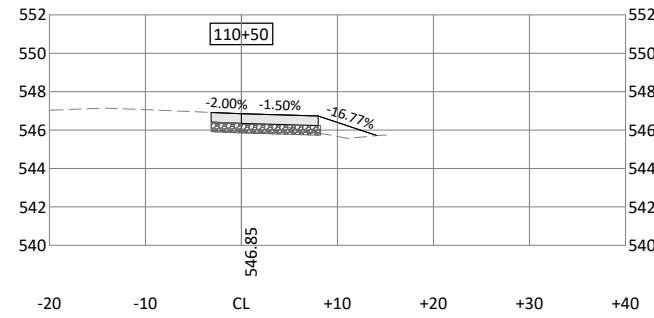
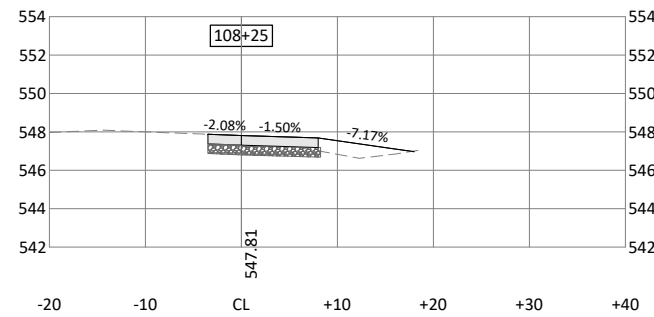
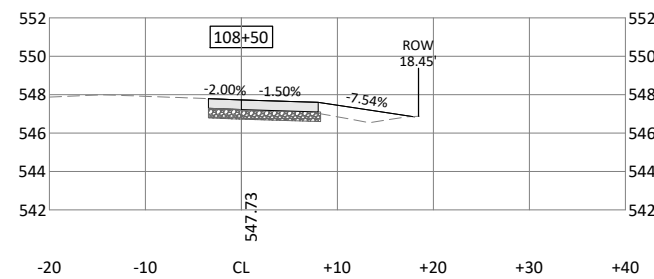
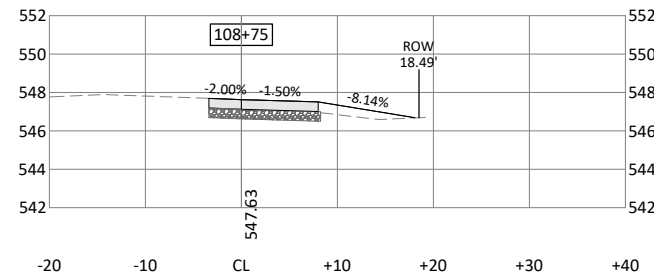
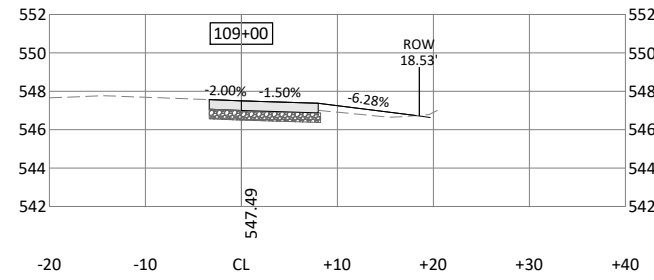
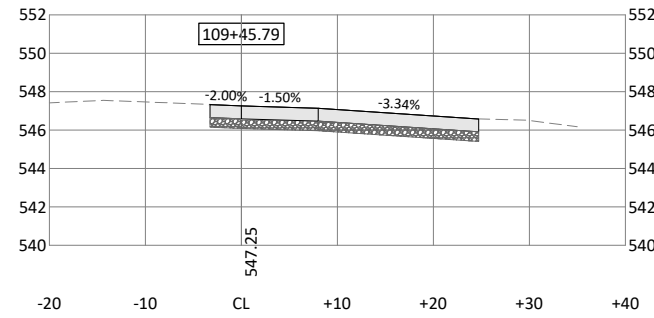


401 FIRST ST SE, SUITE 201
CEDAR RAPIDS, IOWA 52401
Phone: (319) 362-3219
Email: CedarRapids@bolton-menk.com
www.bolton-menk.com

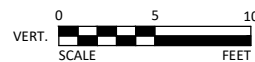
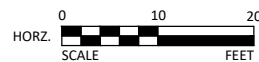
DESIGNED	REV	DESCRIPTION	DATE
JRG/FAM	0	CONSTRUCTION	3/12/24
JRG	1	PHASE 2 - CONSTRUCTION	11/12/24
CHECKED			
JLE			
CLIENT PROJ. NO.			
061.131282			

FRUITLAND, IOWA
NORTH STREET TRAIL
CROSS SECTIONS - PHASE 2

SHEET
W.05



© Bolton & Menk, Inc. 2024. All Rights Reserved. P:\PROJECTS\11111111\CADD\11111111.dwg, 11/18/2024 8:21:02 AM



401 FIRST ST SE, SUITE 201
CEDAR RAPIDS, IOWA 52401
Phone: (319) 362-3219
Email: CedarRapids@bolton-menk.com
www.bolton-menk.com

DESIGNED	REV	DESCRIPTION	DATE
JRG/FAM	0	CONSTRUCTION	3/12/24
JRG	1	PHASE 2 - CONSTRUCTION	11/12/24
JLE			
CLIENT PROJ. NO.			
OG1.131282			

FRUITLAND, IOWA
NORTH STREET TRAIL
CROSS SECTIONS - PHASE 2

SHEET
W.06